

Kerio Exchange Migration Tool

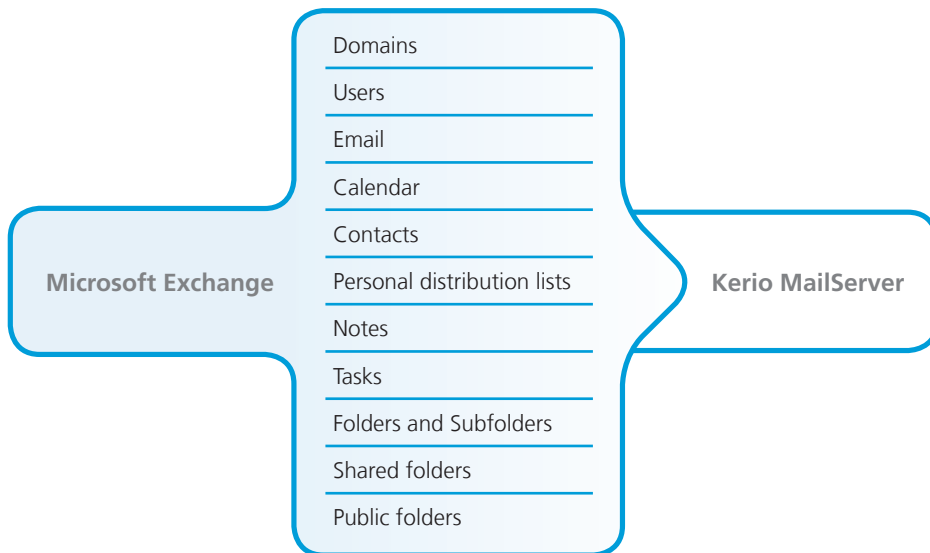
EASY MIGRATION FROM MICROSOFT EXCHANGE TO KERIO MAILSERVER

Kerio Exchange Migration Tool makes the transition from Microsoft Exchange to Kerio MailServer smooth and easy. It provides a reliable high performance migration while having minimal impact on end users.

The cost and time to migrate can vary widely with each organisation, but Kerio Exchange Migration Tool reduces the hassle, cost and time by streamlining the process with an easy-to-use wizard.



ITEMS MIGRATED



ADMINISTRATION BENEFITS OF MIGRATING TO KERIO MAILSERVER

Fewer dependencies than Exchange

- Kerio MailServer does not require Active Directory.
- Kerio MailServer comes integrated with mobile email, anti-spam, anti-virus, email archiving and server backup.
- Additional server roles not required.

Greater flexibility

- Scale as you grow. Same version for all message store sizes.

- Migrate to Mac or Linux.
- Create temporary email accounts for contractors without giving Active Directory access.

Lower maintenance requirements

- Unattended and live server backups.
- Highly intuitive administration console for easier administration.
- Optimised architecture for less complication.

Key Benefits

- Prevents data loss by preserving data on Exchange.
- Simplify migration with a user-friendly wizard to guide and do the heavy lifting.
- Expedite migration by reducing time-consuming migration tasks.
- Lower the cost of migration with less migration requirements.
- Minimise end user interruption with Active Directory mapping option.
- Ensure migration success with detailed reporting and debug logging.

Migrate from

- Exchange 5.5 (SP4)
- Exchange 2000 (SP3)
- Exchange 2003 (SP2)
- Exchange 2007 (SP1)

Testimonial

"A big part of any corporate email solution change is a solid account migration strategy. Kerio's Exchange Migration Tool made the migration process quick, easy, and smooth."

*Chris Sumner
Institute for the Future*

Additional Deployment Tools

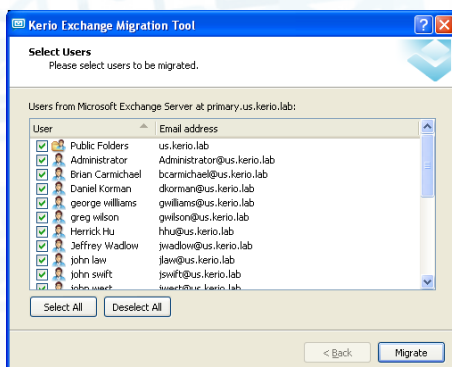
Minimise IT dependence with self-provisioning and automated tools.

- MSI based Windows installers
- Outlook auto-configuration tool
- Apple iCal auto-configuration tool

FLEXIBLE MIGRATION OPTIONS

Kerio MailServer and Kerio Exchange Migration Tool provide flexible options to allow for easier changes and greater migration manageability.

- Four user creation options:
 - Preserve user passwords with Active Directory mapping.
 - Import username and passwords from a CSV file.
 - Create users manually on Kerio MailServer.
 - Create users and auto-generate passwords with the migration tool.
- Select users to migrate.
- Migrate incrementally by moving blocks of users at a time.



MIGRATION TOOL PERFORMANCE

The approximate migrate speed is 1 GB of data per hour*. Speed will vary depending on the hardware resources on the Exchange server, migration tool machine and destination machine.

The migration tool can run on the Kerio MailServer machine, but performance may be higher by running the migration tool on a separate standalone machine.



* Performance data is based on the following configurations:

Exchange machine	Kerio Exchange Migration Tool machine	Kerio MailServer machine
P4 2.4Ghz	P4 2.4 Ghz	P4 2.4Ghz
1 GB RAM	1.25 GB RAM	2GB RAM
Windows 2003 Server	Windows XP	Windows XP
Exchange 2003	Outlook 2003	Kerio MailServer 6.5.2

System Requirements

Migration Machine

- Operating system
- Windows XP
 - Windows Vista
 - Windows 2003 Server
 - Windows 2008 Server

Other requirements

- Microsoft Outlook 2003 sp2 or 2007 installed
- Not the Exchange server
- Can be the Kerio MailServer machine
- Exchange administrator password

Target Machine

- Kerio MailServer 6.5.2 and up
- OS version supported by Kerio MailServer: Mac/Windows/Linux

About Kerio

Innovating in Internet security since 1997, Kerio Technologies, Inc. provides Internet messaging and firewall software for small-to-medium sized organisations worldwide.

Kerio is headquartered in San Jose, California, and has offices in New York, Great Britain, Germany, Czech Republic and Russia. Kerio is a member of CalConnect, a premier member of the Apple Developer Connection and a Microsoft Gold Certified Partner.

© 2008 Kerio Technologies, Inc. All rights reserved. The names of actual companies and products mentioned herein may be trademarked by their respective owners.

Published 10/2008